



Safety is for life.™

Explosion Prevention

Electrostatic grounding



Reliable. German.
Safety. ●●●



Grounding monitoring systems

03 | SYMEGA.VO

04 | SYMEGA.SI

05 | Q.Crodile Magnet X2

06 | Q.Crodile CF-Magnet X2

07 | Q.Crodile X PL114-2

08 | Q.Crodile X PL123-2

09 | Grounding spiral cable

10 | EVS Plug connections

11 | EX-I Junction box

Standard grounding solutions

13 | Q.Crodile X PL106-1

14 | Q.Crodile X PL114-1

15 | Q.Crodile X PL123-1

16 | Q.Crodile X PL115-1

17 | Q.Crodile X PL115-KAIMAN

18 | Q.Crodile X PL115-MINI KAIMAN

19 | Q.Crodile Magnet X1

20 | Grounding spiral cable 4 mm²

21 | Grounding spiral cable 4 mm²/2,5 mm²

22 | Grounding reel S-RL

23 | Clamp Holder



SYMEGA.VO

Grounding monitoring system

Reliable. German.
Safety. ●●●●

As part of a progressive automation process Symega systems are primarily used in the process, chemical and pharmaceutical industries. They make a significant contribution to plant safety by protecting against electrostatic charge in potentially explosive atmospheres. Symega grounding monitoring systems offer the best possible protection against electrostatic discharge during the process. Processes can be safely controlled or interrupted by continuously monitoring the resistance using grounding clamps and the potential-free changeover contacts connected to the monitoring system.

The SYMEGA.VO grounding monitoring system may be operated in potentially explosive atmospheres in zones 1 and 21. It establishes a safe connection between stationary and mobile, metallic or conductive and dissipative objects and a good earth. The built-in LEDs signal the actual status of the grounding process. Thanks to the two built-in potential-free changeover contacts, this status can be fully integrated into the

Version

- SYMEGA.VO 1 grounding system for 1 object with 2 potential-free changeover contacts per connection
- SYMEGA.VO 2 grounding system for 2 objects with 2 potential-free changeover contacts per connection
- SYMEGA.VO 3 grounding system for 3 objects with 2 potential-free changeover contacts per connection
- SYMEGA.VO 4 grounding system for 4 objects with 2 potential-free changeover contacts per connection

process control system and therefore represents the highest possible level of safety. The measurement can be carried out in two variants: low-impedance for potential equalisation of 0-1 k Ω or 103 Ω for all metallic objects and high-impedance for potential equalisation of 0-3 M Ω or 3 x 10⁶ Ω for type C big bags.

Technical data

Area of application	Zone 1, 2 and 21, 22
Ex labelling	II (1) 2G Ex eb ia mb IIC T4 Gb II (1) 2D Ex ia tb 120°C Db
Test number	TPS 18 ATEX 92819 002 X
Enclosure material	Stainless steel V2A
Enclosure sizes/ Number of grounding systems	200 x 200 x 80 mm / 1 200 x 200 x 120 mm / 2 200 x 300 x 120 mm / 3 300 x 300 x 120 mm / 4
Protection class	IP 64
Potential-free changeover contacts	2 pieces per board
Supply voltage	8 V to 28 V DC
Power consumption	< 1W per board
Switching current relay contact	max. 2 A DC max. 6 A AC
Ambient temperature	-20°C to +40°C
Application range	Drums, containers, lorries, tankers, big bags type C, IBC containers

Certifications



ATEX
EU-type examination certificate no.
TPS 18 ATEX 92819 002 X





SYMEGA.SI

Grounding monitoring system

Reliable. German.
Safety. ●●●●

The SYMEGA.SI grounding system is installed in the switch cabinet outside potentially explosive atmospheres. It establishes a safe connection between stationary and mobile, metallic or conductive objects and good grounding. The circuits for grounding and the LEDs are intrinsically safe and may be routed up to zones 0 and 20 in order to visualise the current status of the grounding process in the application to the user. For maximum safety, this status can be fully integrated into the process control system via the two potential-free changeover contacts. Potential equalisation can be measured in two variants: low-impedance for potential equalisation of 0-1 k Ω or 103 Ω for all metallic objects and high-impedance for potential equalisation of 0-3 M Ω or 3 x 10⁶ Ω for type C big bags.

Version

SYMEGA.SI grounding system with 2 potential-free changeover contacts

Technical data

Area of application (Measuring circuit)	Non-ex, Zone 0, 1, 2 and 20, 21, 22
Ex labelling	II (1) GD [Ex ia] IIC [Ex ia] IIIC
Test number	TPS 18 ATEX 92819 0003 X
Assembly	in the non-ex area
Measuring cable Ex-i	Zone 0 and Zone 20
Enclosure size	35 x 110 x 105 mm
Potential-free changeover contacts	2 pieces
Supply voltage	8 V to 28 V DC
Power consumption	< 1W
Switching current relay contact	max. 2 A DC max. 6 A AC
Application range	Drums, containers, lorries, tankers, big bags type C, IBC containers

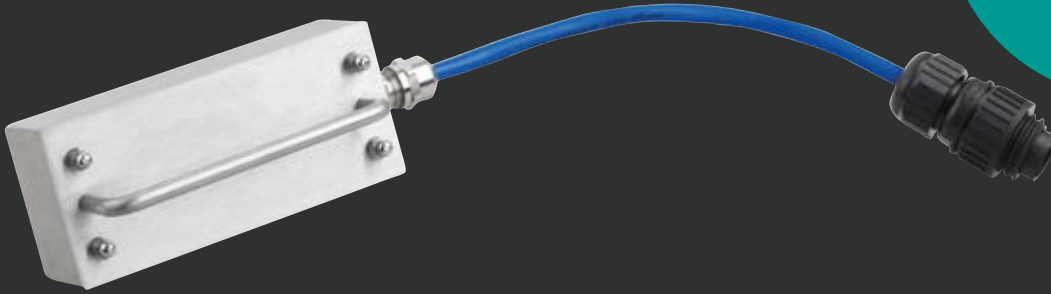
Certifications



ATEX
EU-type examination certificate no.
TPS 18 ATEX 92819 0003 X

Q.Crodile Magnet X2

Grounding magnet two-pole



Reliable. German.
Safety. ●●●●

The Q.Crodile Magnet X2 was designed as a flat component. It can be used wherever safe grounding is required but there is not enough space for grounding clamps. The hand magnet is placed on the lid or on the side of the drum and held in place by magnetic force. The two built-in tips connect to the base of the drum with a little manual rubbing, creating a secure connection to good earth.

Advantages

- ✓ Metal parts made from stainless steel
- ✓ Dissipative plastic
- ✓ High magnetic force
- ✓ Connection via quick connector

Version

Q.Crodile Magnet X2 (two-pole) incl. 20 cm blue cable and plug

Technical data

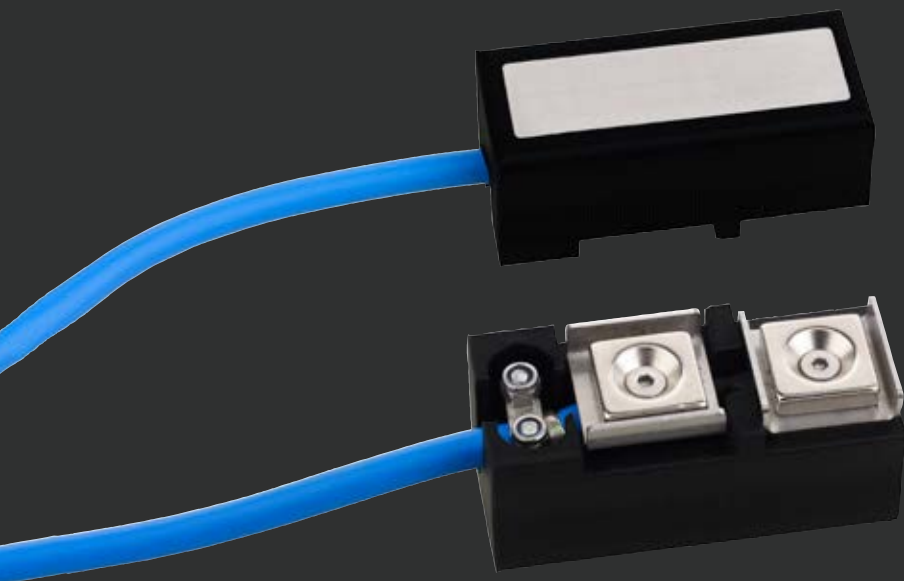
Area of application	Zone 1, 2 and 21, 22
Ex labelling	II 2G Ex h IIB T6 Gb II 2D Ex h IIB T80°C Db
Material	Stainless steel 1.4301
Dimensions	150 x 75 x 55 mm (B x H x T)
Tips	2 pieces, made of WKZ steel
Mounted cable	20 cm blue, two-pole with plug
Application range	Painted and unpainted containers with a volume of over 50 litres

Certifications



EU Declaration of Conformity

141.001



**Q.Crodile
CF-Magnet X2**
Grounding magnet
two-pole

Reliable. German.
Safety. ●●●●

The Q.Crodile CF-Magnet X2 is the perfect solution when it comes to safely grounding small, unpainted drums and containers. Thanks to its light weight and strong magnetic force, it can be easily attached to the top of the drum lid or to the side of the drum. The flexible cable minimises tensile forces and ensures that even the smallest containers can be safely earthed without falling over.

Advantages

- ✓ Metal parts made from stainless steel
- ✓ Dissipative plastic
- ✓ Cable secured with strain relief
- ✓ Connection via quick connector

Version

Q.Crodile CF-Magnet X2 (two-pole) incl. 20 cm blue cable and plug

Technical data

Area of application	Zone 1, 2 and 21, 22
Ex labelling	II 2G Ex h IIB T6 Gb II 2D Ex h IIIB T80°C Db
Test number	141.001
Material	ABS ESD
Dimensions	60 x 26 x 25 mm (B x H x T)
Connection type	single-pole via tubular cable lug max. 4 mm ²
Application range	Small unpainted containers, metallic and conductive funnels, drum pumps, agitators

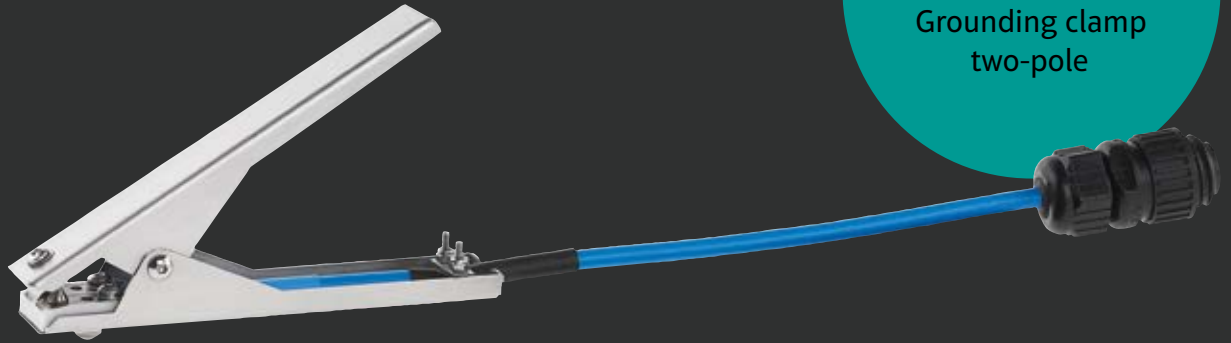
Certifications



EU Declaration of Conformity

141.001

Q.Crodile X PL114-2 Grounding clamp two-pole



The Q.Crodile X PL114-2 two-pole grounding clamp is suitable for all common applications, such as grounding drums, containers and canisters. Thanks to its robust design, it is also suitable for the harshest environmental conditions. The stainless steel teeth used are hardened and therefore particularly durable. The grounding clamp is intended exclusively for use with the SYMEGA series grounding systems.

Advantages

- ✓ Metal parts made from stainless steel
- ✓ Hardened stainless steel teeth for a long service life
- ✓ Connection via quick connector for a quick change during operation
- ✓ High contact pressure of the pliers due to strong spring
- ✓ Stainless steel teeth particularly sharp due to 60° angle
- ✓ Cable secured with strain relief

Version

Grounding clamp Q.Crodile X PL114-2
incl. 20 cm blue cable and plug (Male) EVS

Technical data

Area of application	Zone 0, 1, 2 and 20, 21, 22
Ex labelling	II 1G Ex h IIC T6 Gb II 1D Ex h IIIC T80°C Db
EB labelling	Simple equipment according to DIN EN 60079-11
Material	Stainless steel 1.4301
Stainless steel teeth	Hardened, 2 pieces (mounted on one side of the leg)
Connection type	Pre-assembled two-pole cable (20 cm) incl. EVS plug
Leg length	140 mm
Opening width	15 mm
Application range	Painted and unpainted containers, metallic and conductive hoppers, IBCs, tank lorries

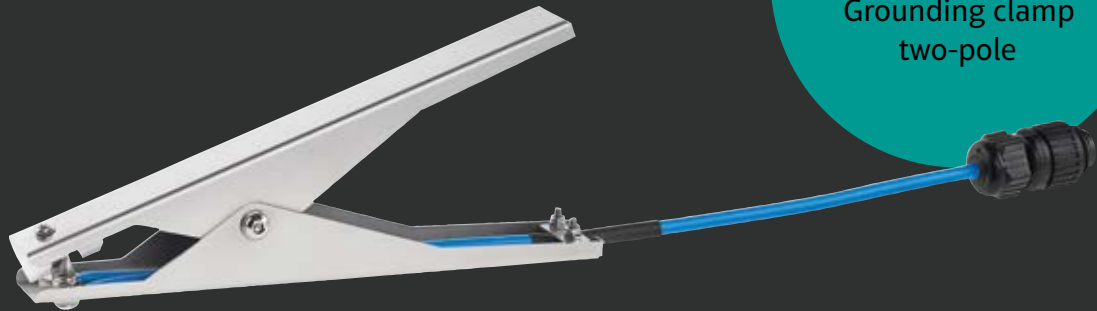
Certifications



ATEX
EU-type examination certificate no.
TPS 19 ATEX 092819 0004 X



**Q.Crodile
X PL123-2**
Grounding clamp
two-pole



The Q.Crodile X PL123-2 two-pole grounding clamp is particularly suitable for discharging electrostatic charges from potentially charged system parts. Pointed stainless steel teeth penetrate insulating layers such as paint, rust, dirt and grease thanks to high contact pressure. This creates an effective 'metal-to-metal' connection and guarantees reliable grounding. The grounding clamp is intended exclusively for use with the SYMEGA range of grounding systems.

Advantages

- ✓ Metal parts made from stainless steel
- ✓ Hardened stainless steel teeth for a long service life
- ✓ Connection via quick connector for a quick change during operation
- ✓ High contact pressure of the pliers due to strong spring
- ✓ Safe handling with work gloves
- ✓ Cable secured with strain relief

Version

Grounding clamp Q.Crodile X PL123-2
incl. 20 cm blue cable and plug (Male) EVS

Technical data

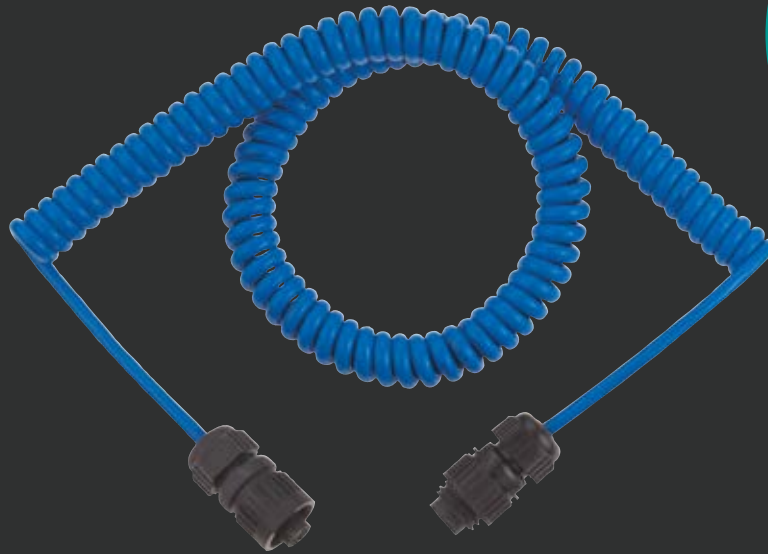
Area of application	Zone 0, 1, 2 and 20, 21, 22
Ex labelling	II 1G Ex h IIC T6 Gb II 1D Ex h IIIC T80°C Db
EB labelling	simple equipment according to DIN EN 60079-11
Material	Stainless steel 1.4301
Stainless steel teeth	hardened, 2 pieces (mounted on one mounted on one side of the leg)
Connection type	Pre-assembled 2-pole cable (20 cm) incl. EVS plug
Leg length	230 mm
Opening width	40 mm
Application range	Large painted and unpainted containers and barrels, tank lorries, rail tank wagons

Certifications



ATEX
EU-type examination certificate no.
TPS 19 ATEX 092819 0004 X





Grounding spiral cable

Copper core
two-pole

The two-pole spiral cables are used to connect the intrinsically safe circuits of the SYMEGA series grounding monitoring systems with their peripherals (e.g. grounding clamps). The cable sheath is resistant to acids, alkalis, mineral oils, grease and other chemicals. As the spiral cables fulfil all the requirements of the DIN EN 60079-0 and DIN EN 60079-14 standards, they may be used in potentially explosive atmospheres.

Advantages

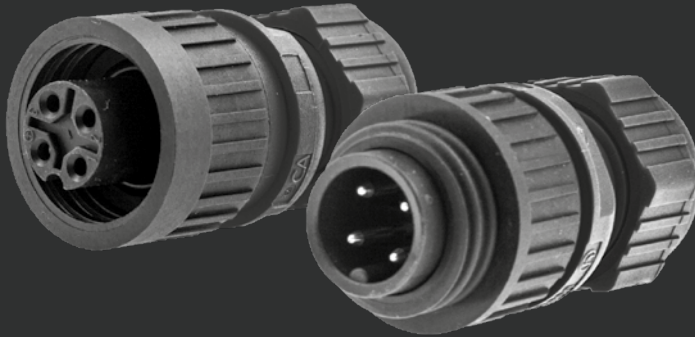
- ✓ Highly flexible cable
- ✓ Resistant to acids, alkalis and chemicals
- ✓ Free from silicones
- ✓ Customised production of special lengths

Technical data

Area of application	according to DIN EN 60079-14
Cable type	H05BQ-F
Coat colour	blue
Core type	Copper, tin-plated
Cross-section	2 x 0,75 mm ²
Side A + B	150 mm tangential in each case
Capacity	56 nF/m
Inductance	0,53 mH/km
Ambient temperature	-40°C to +80°C

Version	Core type	Length	Connection type	Block length
Spiral cable blue	Copper core (two-pole) 1	1 m	without plug connections	230 mm
Spiral cable blue	Copper core (two-pole) 1	3 m	without plug connections	750 mm
Spiral cable blue	Copper core (two-pole) 1	5 m	without plug connections	1.250 mm
Spiral cable blue	Copper core (two-pole) 1	10 m	without plug connections	2.500 mm

EVS Plug connections Accessories



The EVS connectors are used to connect the intrinsically safe circuits of the SYMEGA series grounding monitoring systems with their peripherals (spiral grounding cables, grounding clamps). These connectors allow devices to be replaced without interrupting operation. This saves time and money and ensures reliable operation.

Version

Plug EVS for connecting the intrinsically safe circuits of the grounding systems (Male)

Socket EVS for connecting the intrinsically safe circuits of the grounding systems (Female)

Flange socket EVS for connecting the intrinsically safe circuits of the grounding systems

EX-I Junction box Accessories



The junction box with indicator light is suitable as a status display for the SYMEGA.SI grounding monitoring system. The supply cable of the grounding system is inserted into the cable gland installed at the top and connected in the junction box. One of the two-pole spiral grounding cables with plug connection is connected to the flange socket mounted in the lower part. This enables a cable to be changed quickly during operation.

Version

Ex-i junction box with flange socket and green Ex-i indicator light



Standard grounding solutions



**Q.Crodile
X PL106-1**
Grounding clamp
single-pole

The Q.Crodile X PL106-1 grounding clamp is suitable for all common applications in which the smallest system parts need to be earthed. Its robust design makes it suitable for even the harshest environmental conditions. The built-in stainless steel teeth are hardened and therefore particularly durable. When not in use, the teeth are protected by the relief holes in the pliers.

Advantages

- ✓ Robust construction
- ✓ Metal parts made of stainless steel
- ✓ Hardened stainless steel teeth for a long service life
- ✓ High contact pressure of the pliers due to strong spring
- ✓ Cable secured with strain relief

Version

Grounding clamp Q.Crodile X PL106-1

Technical data

Area of application	Zone 0, 1, 2 and 20, 21, 22
Ex labelling	II 1G Ex h IIC T6 Gb II 1D Ex h IIIC T80°C Db
Material	Stainless steel 1.4301
Stainless steel teeth	hardened, 2 pieces (mounted on one mounted on one side of the leg)
Connection type	single-pole by means of M3 eyelet (max. 4 mm ²)
Leg length	60 mm
Opening width	15 mm

Certifications



ATEX
EU-type examination certificate no.
TPS 19 ATEX 092819 0004 X



**Q.Crodile
X PL114-1**
Grounding clamp
single-pole



The Q.Crodile X PL114-1 grounding clamp is suitable for all common applications, such as grounding drums, containers and canisters. The robust design of the grounding clamp qualifies it for even the harshest environmental conditions. The stainless steel teeth used are hardened and therefore particularly durable. When not in use, they are protected by the relief holes in the clamp.

Advantages

- ✓ Robust construction
- ✓ Metal parts made of stainless steel
- ✓ Hardened stainless steel teeth for a long service life
- ✓ High contact pressure of the pliers due to strong spring
- ✓ Cable secured with strain relief

Version

Grounding clamp Q.Crodile X PL114-1

Technical data

Area of application	Zone 0, 1, 2 and 20, 21, 22
Ex labelling	II 1G Ex h IIC T6 Gb II 1D Ex h IIIC T80°C Db
Material	Stainless steel 1.4301
Stainless steel teeth	hardened, 2 pieces (mounted on one mounted on one side of the leg)
Connection type	single-pole by means of M3 eyelet (max. 10 mm ²)
Leg length	140 mm
Opening width	15 mm

Certifications



ATEX
EU-type examination certificate no.
TPS 19 ATEX 092819 0004 X



Q.Crodile X PL123-1

Grounding clamp
single-pole



The Q.Crodile X PL123-1 grounding clamp is suitable for all common and rough applications such as grounding drums, containers and canisters, lorries, trucks and IBCs. Thanks to its robust design, the Q.Crodile X PL123-1 is suitable for even the harshest environmental conditions. Its hardened stainless steel teeth are extremely durable. They are protected when the grounding clamp is not in use thanks to the relief holes in the clamp. Thanks to their generous dimensions, these pliers are perfect to use even when wearing gloves.

Advantages

- ✓ Robust construction
- ✓ Metal parts made of stainless steel
- ✓ Hardened stainless steel teeth for a long service life
- ✓ High contact pressure of the pliers due to strong spring
- ✓ Cable secured with strain relief

Version

Grounding clamp Q.Crodile X PL123-1

Technical data

Area of application	Zone 0, 1, 2 and 20, 21, 22
Ex labelling	II 1G Ex h IIC T6 Gb II 1D Ex h IIIC T80°C Db
Material	Stainless steel 1.4301
Stainless steel teeth	hardened, 2 pieces (mounted on one mounted on one side of the leg)
Connection type	single-pole by means of M8 eyelet (max. 16 mm ²)
Leg length	230 mm
Opening width	40 mm

Certifications



ATEX
EU-type examination certificate no.
TPS 19 ATEX 092819 0004 X



**Q.Crodile
X PL115-1**
Grounding clamp
single-pole



The Q.Crodile X PL115-1 grounding clamp is suitable for grounding all unpainted system parts and flexible conductive materials. Typical applications include the grounding of unpainted containers, FIBCs, pipes and container handles. The built-in trident teeth ensure a firm hold without destroying the material. In addition, all round materials with a diameter of > 20 mm can be safely earthed.

Advantages

- ✓ Metal parts made of stainless steel
- ✓ High contact pressure of the pliers due to strong spring
- ✓ Safe handling with work gloves

Version

Grounding clamp Q.Crodile X PL115-1 wsr
Grounding clamp Q.Crodile X PL115-1 wosr

Strain relief

with strain relief
without strain relief

Technical data

Area of application	Zone 0, 1, 2 and 20, 21, 22
Ex labelling	II 1G Ex h IIC T6 Gb II 1D Ex h IIIC T80°C Db
Material	Stainless steel 1.4301
Stainless steel teeth	Trident (opposite)
Connection type	single-pole via tubular cable lug M8 (max. 10 mm ²)
Leg length	150 mm
Opening width	45 mm
Strain relief	yes (wsr-version) no (wosr-version)
Application range	Large uncoated containers and drums, pipes and round materials, laboratory handles, FIBCs and IBCs

Certifications



ATEX
EU-type examination certificate no.
TPS 19 ATEX 092819 0004 X



Q.Crodile X PL115-KAIMAN

Grounding clamp
single-pole



The Q.Crodile X PL115-KAIMAN grounding clamp is the all-round solution for all demanding working environments. Thanks to the built-in spring and hardened tips, they achieve the greatest possible biting force to safely penetrate layers of paint, coarse dirt and layers of rust. Thanks to the very large opening angle, the grounding clamp can be used for almost all applications. When the grounding clamp is not in use, the stainless steel teeth are protected by the plastic spacers.

Advantages

- ✓ Metal parts made of stainless steel
- ✓ High contact pressure of the pliers due to strong spring
- ✓ Stainless steel teeth turned to 60° and therefore particularly sharp
- ✓ Safe handling with work gloves
- ✓ Hardened stainless steel teeth for a long service life

Version

Version	Strain relief
Grounding clamp Q.Crodile X PL115-KAIMAN wsr	with strain relief
Grounding clamp Q.Crodile X PL115-KAIMAN wosr	without strain relief

Technical data

Area of application	Zone 0, 1, 2 and 20, 21, 22
Ex labelling	II 1G Ex h IIC T6 Gb II 1D Ex h IIIC T80°C Db
Material	Stainless steel 1.4301
Stainless steel teeth	hardened, 2 pieces (mounted opposite each other)
Connection type	single-pole via tubular cable lug M8 (max. 10 mm ²)
Leg length	150 mm
Opening width	45 mm
Strain relief	yes (wsr-version) no (wosr-version)
Application range	Large unpainted containers and barrels, tank lorries, rail tank wagons, silo vehicles, containers

Certifications



ATEX
EU-type examination certificate no.
TPS 19 ATEX 092819 0004 X



**Q.Crodile
X PL115-MINI
KAIMAN**
Grounding clamp
single-pole



The Q.Crodile X PL115-MINI KAIMAN is suitable for all common applications in which the smallest system parts need to be earthed and a cost-effective solution is required. The robust design of the Mini-Kaiman makes it suitable for even the harshest environmental conditions. The optionally available cable is attached to the grounding clamp via an M3 eyelet and secured by means of strain relief. This grounding clamp is only available in a packaging unit of 10 pieces.

Advantages

- ✓ Robust construction
- ✓ Metal parts made of stainless steel
- ✓ Hardened stainless steel teeth for a long service life
- ✓ High contact pressure of the pliers due to strong spring

Version

Grounding clamp
Q.Crodile X PL115-MINI KAIMAN

Number of packs

10 pieces

Technical data

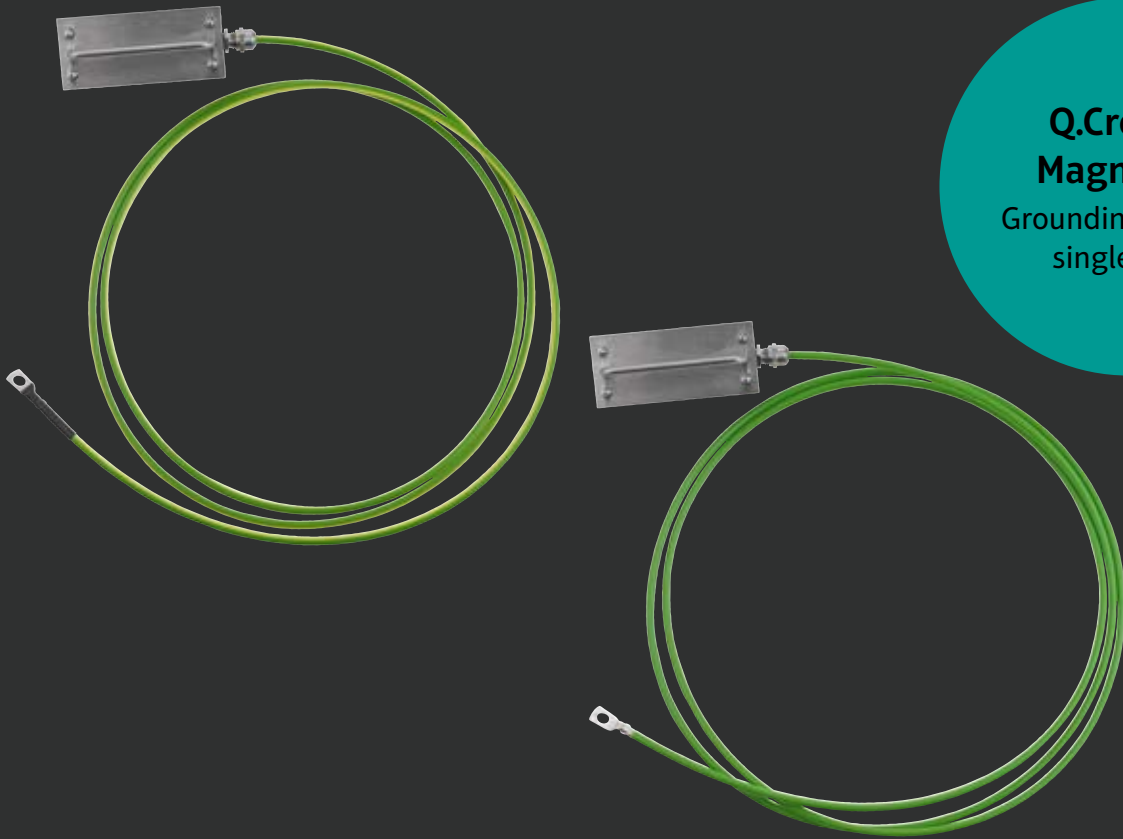
Area of application	Zone 0, 1, 2 and 20, 21, 22
Ex labelling	II 1G Ex h IIC T6 Gb II 1D Ex h IIIC T80°C Db
Material	Stainless steel 1.4301
Stainless steel teeth	2 pieces (opposite)
Connection type	single-pole by means of M3 eyelet (max. 4 mm ²)
Leg length	130 mm
Opening width	33 mm

Certifications



ATEX
EU-type examination certificate no.
TPS 19 ATEX 092819 0004 X





**Q.Crodile
Magnet X1**
Grounding magnet
single-pole

The Q.Crodile Magnet X1 is the ideal solution when safe grounding of drums and containers is required, but the space required for a normal grounding clamp is not available. The flat housing can either be mounted on top of the drum lid using magnetic force or held on the side of the drum using magnetic force. The two tips of the hand magnet connect to the lacquered base of the drum with a little manual rubbing, creating a secure connection to good earth. Please note that this magnet is designed as a simple grounding solution without monitoring.

Advantages

- ✓ Metal parts made from stainless steel
- ✓ Dissipative plastic
- ✓ High magnetic force

Version

Q.Crodile Magnet X1

Technical data

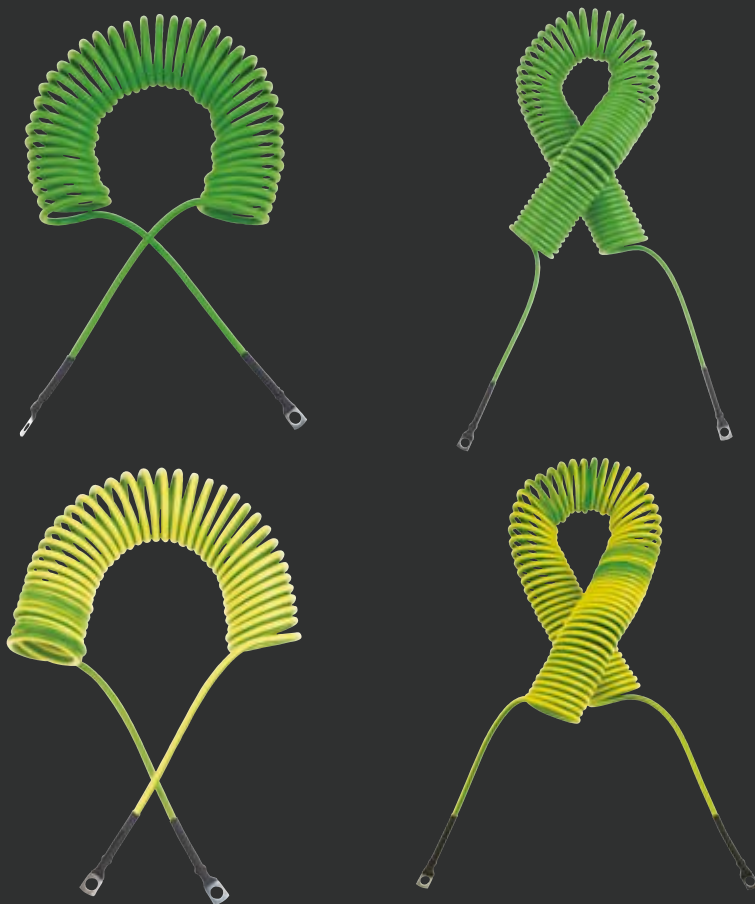
Area of application	Zone 1, 2 and 21, 22
Ex labelling	II 2G Ex h IIB T6 Ga II 2D Ex h IIIB T80°C Db
Material	Stainless steel 1.4301
Dimensions	150 x 75 x 55 mm (B x H x T)
Tips	2 pieces, made of WKZ steel
Application range	Painted and unpainted Containers with a volume of more than 50 litres

Certifications



EU Declaration of Conformity

141.001



Grounding spiral cable
4 mm²
 Steel core
 single-pole

The single-pole, silicone-free steel core spiral cables from REMBE® offer superior mechanical strength. The steel core used can withstand continuous daily use and its cable sheath is extremely resistant to acids, alkalis, mineral oils, grease and other chemicals. In contrast to conventional copper cables, the stranded steel wire does not break due to continuous daily use.

A visual inspection is sufficient if the outer sheath is undamaged and the ring cable lug is firmly attached. As the spiral cables fulfil all the requirements of the DIN EN 60079-0 and DIN EN 60079-14 standards, they may be used in potentially explosive atmospheres.

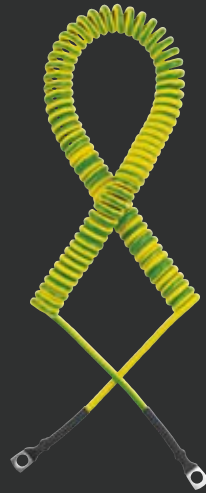
Advantages

- ✓ Steel core for superior mechanical strength
- ✓ Cable sheath is resistant to acids, alkalis, Mineral oils, fats and other chemicals
- ✓ Free from silicones
- ✓ Customised production of special lengths

Technical data

Area of application	according to DIN EN 60079-14
Cable type	ST-Li2Y
Coat colour	green or green/yellow
Core type	Steel core
Cross-section	4 mm ²
Side A + B	200 mm axial in each case
Ambient temperature	-40°C to +80°C

Version	Core type	Length	Cross-section	Block length
Straight cable green	Steel core (single-pole)	1 m	4 mm ²	By the metre
Spiral cable green	Steel core (single-pole)	3 m	4 mm ²	160 mm
Spiral cable green	Steel core (single-pole)	5 m	4 mm ²	260 mm
Spiral cable green	Steel core (single-pole)	10 m	4 mm ²	600 mm
Straight cable green/yellow	Steel core (single-pole)	1 m	4 mm ²	By the metre
Spiral cable green/yellow	Steel core (single-pole)	3 m	4 mm ²	160 mm
Spiral cable green/yellow	Steel core (single-pole)	5 m	4 mm ²	260 mm
Spiral cable green/yellow	Steel core (single-pole)	10 m	4 mm ²	600 mm



**Grounding
spiral cable**
4 mm²/2,5 mm²
Copper core
single-pole

The single-pole copper spiral cables are characterised by their extremely high flexibility. The copper core used consists of 226 individual copper strands, which minimise the risk of cable breakage. Their cable sheath provides adequate protection against acids, alkalis, mineral oils, greases and other chemicals. The spiral cables fulfil all requirements of the standards DIN EN 60079-0 and DIN EN 60079-14 and may therefore be used in potentially explosive atmospheres. The spiral cables are silicone-free.

Advantages

- ✓ Copper core for extremely high flexibility
- ✓ Cable sheath resistant to acids, alkalis, mineral oils, grease and other chemicals
- ✓ Free from silicones
- ✓ Customised production of special lengths

Technical data

Area of application	according to DIN EN 60079-14
Cable type	LIF11Y11Y, 226 x 0,15 mm
Coat colour	green/yellow
Core type	Copper core
Cross-section	4 mm ² oder 2,5 mm ²
Side A + B	150 mm axial in each case
Ambient temperature	-40°C to +80°C
Cable ends	can be customised with eyelets at no extra charge

Version	Core type	Length	Cross-section	Block length
Straight cable green/yellow	Copper core (single-pole)	1 m	4 mm ²	By the metre
Spiral cable green/yellow	Copper core (single-pole)	1 m	4 mm ²	100 mm
Spiral cable green/yellow	Copper core (single-pole)	3 m	4 mm ²	600 mm
Spiral cable green/yellow	Copper core (single-pole)	5 m	4 mm ²	1.000 mm
Spiral cable green/yellow	Copper core (single-pole)	10 m	4 mm ²	2.000 mm
Spiral cable green/yellow	Copper core (single-pole)	1 m	2,5 mm ² (according to TRGS 727)	100 mm
Spiral cable green/yellow	Copper core (single-pole)	3 m	2,5 mm ² (according to TRGS 727)	600 mm
Spiral cable green/yellow	Copper core (single-pole)	5 m	2,5 mm ² (according to TRGS 727)	1.000 mm



Grounding reel S-RL
Stainless steel
single-pole

The installation of REMBE® grounding reels is particularly suitable where no exposed cables are required. An extremely robust stainless steel housing protects the cable and winding mechanism from external environmental influences. The steel or stainless steel cores used are finely twisted and of the highest tensile strength. To wind up the cable, a short pull is enough to release the latch. A rubber bumper cushions the grounding clamp connection in the event of an unintentional retraction. The grounding reel is also available without a catch.

Advantages

- ✓ Sturdy stainless steel housing provides reliable protection from environmental influences
- ✓ Highest tensile strength
- ✓ Rubber bumper to cushion against unintentional retraction
- ✓ Winding mechanism with cable pull operated rewind lock

Technical data

Area of application	Zone 1, 2 and 21, 22
Ex labelling	II 2G Ex h IIC T6 Gb II 2D Ex h IIIC T80°C Db
Housing	Stainless steel
Cable type	Steel or stainless steel core, green coated
Cross-section	2 mm ²
Ambient temperature	-20°C to +40°C
Cable end	can be customised with an eyelet at no extra charge

Certifications



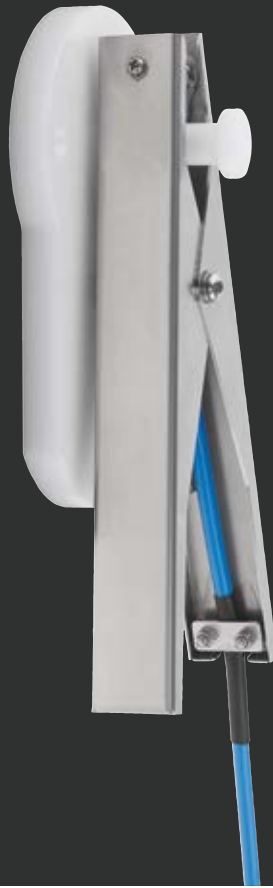
Version

Core type

Cable length

Cross-section

Grounding reel type 1	Steel core, green coated	7 m	2 mm ²
Grounding reel type 2	Steel core, green coated	15 m	2 mm ²



Clamp Holder for wall mounting

The Clamp Holder provides the optimum hold for all grounding clamps and ensures tidy storage so that the grounding clamps are not lying on the floor. It is mounted using simple M6 screws.

Version

Clamp Holder for wall mounting

Technical data

Area of application	Zone 0, 1, 2 and 20, 21, 22
Material	POM plastic
Dimensions	180 x 100 x 15mm Length of the pin: 50 mm
Colour	white



Safety is for life.™

Consulting. Engineering. Products. Service.

The copyright for all content (design, text, pictures, graphics etc.) is the sole property of REMBE® GmbH Safety + Control except where otherwise stated. Reproduction and publication in whatever format, even in part, are strictly prohibited and require our explicit written approval. The specifications, figures and drawings published in our brochures reflect our current understanding of these products. However, they do not represent a binding guarantee of these properties. REMBE® reserves the right to make technical changes or update any information without notice. REMBE® accepts no liability for errors or omissions, technical changes due to research and development or errors in the printing or use of this flyer. It is the sole responsibility of the end user/ plant operator to ensure that REMBE® products are used correctly.



REMBE® GmbH Safety+Control

Gallbergweg 21 | 59929 Brilon, Germany

T +49 2961 7405-0

hello@rembe.de

